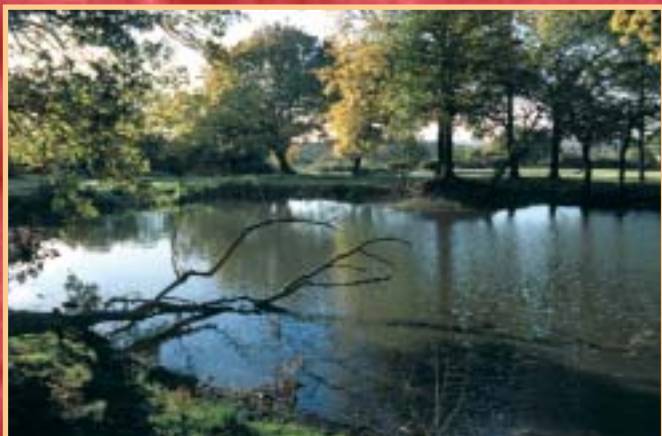


London Biodiversity Partnership  
Annual Report 2001



# Foreword

It is with great pleasure that I present this report of the London Biodiversity Partnership. The Partnership has had many successes since it was first established in 1996. This is particularly true over the past year as implementation of plans has become a reality. We have also been successful in bringing more people on board across the whole of London. The report outlines some of our real contributions to biodiversity that have been achieved by working together. I hope you enjoy reading it.

The amount of hard work that has gone into the Partnership is obvious. However, in order to capitalise on this effort in the future we will need to have security of funding in the long-term. To this end we will be developing an effective business plan in the coming year which will, I hope, enable us to put our work on a firm footing for the future. I would like to thank Esther Collis, the London Biodiversity Partnership Officer, and the Bridge House Estates Trust Fund for enabling us to get this far.

*Professor David Goode  
Chair, London Biodiversity  
Partnership*



© Ian Yarham

## The London Biodiversity Partnership



© Hugh Clark/Bat Conservation Trust



© Sandi Bath/London Wildlife Trust



© Tony Drakeford



© Andy Fisher

The Partnership is a consortium of public, private and voluntary organisations working together for wildlife and people.

The Partnership formed in 1996 to progress a Biodiversity Action Plan for London. This was in response to the process initiated at the Earth summit in Rio in 1992, when the UK government signed the 'Convention on Biological Diversity'.

Milestones 2000

- *The London Biodiversity Audit - Volume 1* of the London Biodiversity Action Plan.

- *Our Green Capital* - an introduction to the London Biodiversity Plan.

- Launch of the Partnership's website [www.lpb.org.uk](http://www.lpb.org.uk) with an online searchable species audit.

Milestones 2001

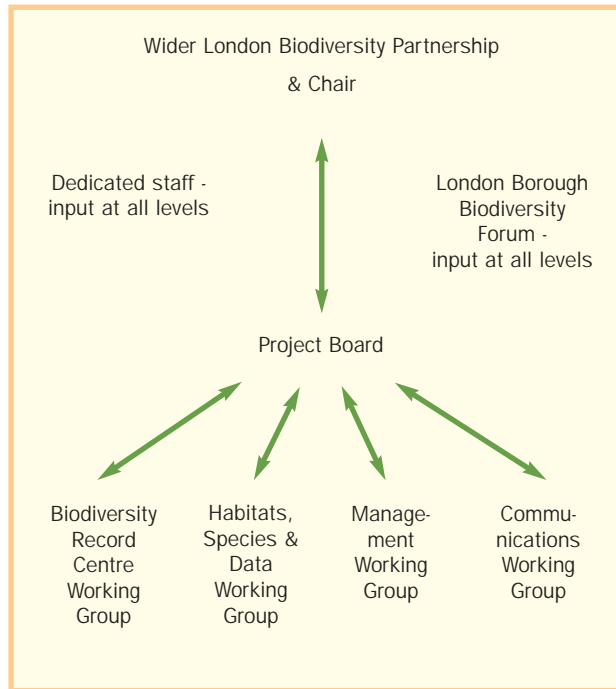
- *The Action - Volume 2* of the London Biodiversity Action Plan. Contains the first round of targeted Habitat, Species and Generic Action Plans for London. Launched by Darren Johnson, Environment Advisor to the Mayor and Leader of the Green Group for the London Assembly.



© Greater London Authority

## New structure for 2001

- **Forward to Action Event** – successful partnership building and networking event attended by 70 people. Facilitated by The Environment Council, the Partnership explored the barriers and opportunities for implementing the London Biodiversity Action Plan.
- **A Practitioners day** - held at the Wetland Centre, Barnes. Focused on overcoming the barriers to implementing Biodiversity Action Plans.
- **Somerset Environmental Records Centre** began work on the development plan for the London Biological Records Centre.
- **The London Biodiversity Species Audit** was updated on the website.
- **Development of the Partnership's publicity guidelines** including a Supporter's Pledge to gain wider support.
- **Start of work on a funding strategy** for the London Biodiversity Action Plan and a business plan for the Partnership.



## An effective Partnership

Restructuring of the Partnership was necessary to improve its efficiency and provide greater openness. The Partnership now meets as a whole at least twice annually. Decisions are made by the various Working Groups, co-ordinated by the Project Board.

**Individual Chairs** are responsible for arranging and co-ordinating meetings and reporting on the outcomes. There are two open places on each Working Group, available through arrangement with the respective Chair. Partnership meetings, agendas and minutes can be found on the website.

To encourage greater organisational commitment, a **Memorandum of Understanding** has been developed and circulated to partners.

Present signatories to the Memorandum of Understanding are:

- BTCV
- Corporation of London
- Countryside Agency
- English Nature
- Environment Agency
- Lee Valley Regional Park Authority
- London Underground Ltd
- London Wildlife Trust
- Royal Botanic Gardens Kew
- Royal Parks
- Thames Water Utilities Ltd
- The London boroughs of Camden, Redbridge, Merton and Wandsworth
- Wildfowl and WetlandsTrust
- Zoological Society of London

# New Action for Nature in 2001

© Charles Snell/London Wildlife Trust

This year has seen significant progress made towards achieving the targets set out in the London Biodiversity Action Plan. The following are just a few of the highlights.

- Thames Chase, Green Gateway and Forest Enterprises have planted up to 100ha of new woodland in East London.
- Supported by English Nature, the BioRegional Development Group have produced a report on use of woodland products.
- The London Heathland Forum has been established. The first meeting of the Forum took place in September with a site visit to look at restoration work at Addington Hills. The day was a great success, with 37 delegates attending from most London heathland sites. This represented a good opportunity to share

best practice, highlighting the importance of local work to the delivery of regional conservation objectives.

- The London Water Vole Project Officer started in March. Based at London Wildlife Trust the post was achieved by a partnership of Environment Agency, London Wildlife Trust, Lee Valley Regional Park Authority, British Waterways and the London Development Agency.
- Summer 2001 saw the introduction of 147 water voles at the Wetland Centre, Barn Elms. Future monitoring will help guide best practice.
- Restoration and maintenance of dykes at Crossness and Crayford marshes for flood defence have been designed to enhance water vole habitat. Dyke works on the Inner Thames

Marshes have included provision for water voles following consultation with London Wildlife Trust, Environment Agency and the RSPB.

- Peregrine Watch Week was launched in June, with a watch point established on the embankment opposite Battersea power station. This generated good media interest from Time Out, Evening Standard and LBC.
- The Environment Agency has produced Best Practice Guidance on artificial bank creation for sand martins and kingfishers.
- The Black Redstart Working Group has advised on 15 new developments. These are likely to include significant habitat improvements and/or mitigation for black redstarts and £13,000 has been raised for publication of an advice note on landscapes for black redstarts.
- With support from English Nature, two mobile stag beetle displays have been produced and are available for shows, libraries and exhibitions. They are



© London Wildlife Trust

held by London Wildlife Trust and LB Bromley.

- Permission has been obtained to store tower mustard seed at Wakehurst Place and 30 seeds collected from Stain Hill Reservoir have been successfully germinated at Kew. About 200 seeds were sown into beds at the Wetland Centre in November. One bed is situated in the intensive exhibit area in Waterlife, which is readily accessible to the public.

© Alex Machin/English Nature



© Andy Fisher



Water Vole sightings 1996 - February 2002



- The following Working Groups have been established and hold regular meetings to oversee the implementation of their action plans: Woodland, Chalk Grassland, Heathland, Wasteland via the London Brownfields Forum, Bats, Grey Heron, Water Vole, Mistletoe, Sand Martin, House Sparrow, Stag Beetle, Black Redstart.

Black Redstart locations 2001



- Existing data collation has been completed and co-ordinated with the London Biological Records Project for the Chalk Grassland, Wasteland, Black Redstart, Water Vole and Mistletoe action plans. This has provided baseline data for future monitoring and identified areas where new surveys and monitoring should be focused.

Mistletoe locations 1996 - 2002



All maps produced by the London Wildlife Trust's Biological Recording Project

Reproduced from Ordnance Survey Meridian TM data with the permission of the controller of Her Majesty's Stationery Office. © Crown Copyright 1998. Licence No. AL100020841

# Work in Progress

© James Farrell

- Collation of historical sand martin records from London Bird Reports.
- Artificial sand martin nest creation sites are under construction at Beddington, Crossness and River Wandle. Projects are planned for 2002/3 at Rainham Marshes, Kempton, Deptford Creek, and Canary Wharf.
- Work has started on assessing the importance of established day roosts for herons, particularly on Thames-side sites. The Royal Parks are currently trialling artificial heron breeding platforms made from woven baskets. The annual London Heron Day was held on the 14 April 2002 at Battersea Park, the Wetland Centre and Regent's Park.
- A house sparrow survey involving the public will be launched in the summer of 2002.
- A Raptor Study Group is being established.
- A Peregrine Advice Note has been produced and will be available in 2002.

- Green Gateway has made early investigations for a timber station in Thamesmead. There is £40,000 of funding to support the initiative.
- A questionnaire for the public and user groups has been produced to find out how chalk grassland is valued. It will be used alongside a portable display about London's downs throughout 2002.
- A report highlighting the wildlife value of brownfield land is due to be published in 2002.
- Through liaison with English Nature and RSPB, fences are to be erected on the Inner Thames Marshes as part of habitat improvement work for water voles.
- A rat control and water vole conservation leaflet is planned for spring 2002 and will be made available to Local Authorities.
- Bow Back Rivers and the River Wandle are being considered as reintroduction sites for water voles.

- A Bat Advice Note will be available in 2002.
- Bat roost opportunities have been identified for 2 pillboxes on the River Beam, Sydenham Hill Wood, Horsenden Hill, Highgate Tunnel, Crossness and Kempton Reservoir.



© Andy Fisher



- Work has started on assessing the importance of established day roosts for herons, particularly on Thames-side sites. The Royal Parks are currently trialling artificial heron breeding platforms made from woven baskets. The annual London Heron Day was held on the 14 April 2002 at Battersea Park, the Wetland Centre and Regent's Park.
- A house sparrow survey involving the public will be launched in the summer of 2002.
- A Raptor Study Group is being established.
- A Peregrine Advice Note has been produced and will be available in 2002.

- Through liaison with English Nature and RSPB, fences are to be erected on the Inner Thames Marshes as part of habitat improvement work for water voles.
- A rat control and water vole conservation leaflet is planned for spring 2002 and will be made available to Local Authorities.
- Bow Back Rivers and the River Wandle are being considered as reintroduction sites for water voles.

© Hugh Clark/Bat Conservation Trust



© Lee Valley Regional Park Authority



# Financial Status

© Sandi Bain/London Wildlife Trust

Funding until December 2001 was provided by the Bridge House Estates Trust Fund. Bridge funding from January 2002 to March 2002 was provided by English Nature. The Partnership is currently awaiting the outcome of two funding applications to secure future funding.

The Partnership agrees that long-term, sustainable funding is essential. This is likely to come from contributions from members, though a major task for 2002 is to explore the options through a business planning process.



© Ian Yanham



## Progress at a Borough Level



Most London boroughs are now engaged in the biodiversity action planning process. The London boroughs of Brent and Waltham Forest published action plans in 2001.

- Partnership established/being established
- Action plan in production
- Biodiversity Action Plan published

Map produced by the London Wildlife Trust's Biological Recording Project  
 Reproduced from Ordnance Survey Meridian TM data with the permission of the controller of Her Majesty's Stationery Office. © Crown Copyright 1998.  
 Licence No. AL10020841



working together for wildlife

London Biodiversity Partnership – 2001

**Project Board**

Greater London Authority (Chair), Association of London Government, British Waterways, BTCV, English Nature, London Borough Biodiversity Forum, London Underground Ltd, London Wildlife Trust, Royal Parks, RSPB, Thames Water Utilities Ltd, Wildfowl and Wetlands Trust

**Management Working Group**

RSPB (Chair), English Nature, Greater London Authority, London Borough Biodiversity Forum, Thames Estuary Partnership

**Communications Working Group**

BTCV (Chair), English Nature, Greater London Authority, Lee Valley Regional Park Authority, London Wildlife Trust, London Zoo, RSPB, Wildfowl and Wetland Trust

**Habitats, Species and Data Working Group**

Wildfowl and Wetlands Trust (Chair), British Waterways, Butterfly Conservation, Environment Agency, Greater London Authority, London Borough Biodiversity Forum, London Natural History Society, London Wildlife Trust

**Biological Records Centre Working Group**

English Nature (Chair), Environment Agency, Greater London Authority, London Natural History Society, London Wildlife Trust

**London Borough Biodiversity Forum**

LB Bromley (Chair), LB Hounslow (Deputy Chair). All London Boroughs are invited to attend

**Partnership staff**

The London Biodiversity Officer is a key motivational force, essential to:

- co-ordinate events involving the whole Partnership
- provide a secretariat to Working Groups
- build commitment from partners
- carry out project development
- provide enthusiasm and day to day leadership
- manage volunteers

**London Biodiversity Partnership**

c/o London Wildlife Trust  
Harling House  
47 - 51 Great Suffolk Street  
London SE1 0BS

tel: 020 7261 0447

fax: 020 7261 0538

email: [enquiries@wildlondon.org.uk](mailto:enquiries@wildlondon.org.uk)

web: [www.lbp.org.uk](http://www.lbp.org.uk)

**Front cover photography by:**

© Sandi Bain/London Wildlife Trust  
Ian Yarham

**Back cover photography by:**

© James Farrell

Designed by Metalanguage Design

Printed on Revolve Silk Recycled Paper

© London Biodiversity Partnership 2002

